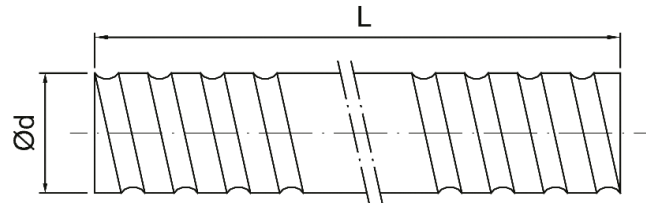


## GÖLYŐSORÓK BALL SCREWS

### SCR TÍPUS SCR TYPE



Cikkszám (jobb) Code (right helix)		Cikkszám (balos) Code (left helix)		Max hossz Max length L	d	Menetemelkedés Lead	Da - gölyő ø Da - ball ø	Pontossági osztály Accuracy grade	Menet sodrás Threading direction J=jobb; B=bal R=right; L=left	Bekezdés Starts	Anya típus Nut type
C5	C7	C5	C7			(mm)					
81.012.002	81.018.002	-	-	1000	6	1	0,8	C10,C7	JR	1	K
81.012.003	81.018.003	-	-	1000	8	1	0,8	C10,C7,C5	JR	1	K
81.012.004	81.018.004	-	-			2	1,2	C10,C7,C5	JR	1	K
81.012.055	81.018.055	-	-	1500	10	2,5	1,2	C10,C7,C5	JR	1	K, BSH
81.012.005	81.018.005	-	-			2	1,2	C10,C7,C5	JR	1	K, BSH
81.012.006	81.018.006	-	-		4	2	C10,C7,C5	JR	1	K, BSH	
81.012.007	81.018.007	-	-		12	2	1,2	C10,C7,C5	JR	1	K
81.012.008	81.018.008	-	-			4	2,5	C10,C7,C5	JR	1	U, BSH
81.012.009	81.018.009	-	-		5	2,5	C10,C7,C5	JR	1	V, U, BSH, S, H	
81.012.010	81.018.010	-	-	10	2,5	C10,C7,C5	JR	2	V, U, BSH, S, H		
81.012.011	81.018.011	-	-	1800	14	2	1,2	C10,C7,C5	JR	1	K
81.012.055	81.018.055	-	-	4		2,5	C10,C7	JR	1	BSH	
81.012.014	81.018.014	-	-	3000	16	4	2,381	C10,C7,C5	JR	1	V, I, U, BSH
81.012.015	81.018.015	81.071.015	81.072.015			5	3,175	C10,C7,C5	J/B/R/L	1	V, I, U, BSH
81.012.016	81.018.016	-	-		10	3,175	C10,C7,C5	JR	2	V, I, U, BSH	
81.012.017	81.018.017	-	-		16	2,778	C10,C7,C5	JR	4	Y	
81.012.056	81.018.056	-	-		32	2,778	C10,C7	JR	8	Y	
81.012.019	81.018.019	-	-		20	4	2,381	C10,C7,C5	JR	1	V, I, U
81.012.020	81.018.020	81.071.020	81.072.020	5		3,175	C10,C7,C5	J/B/R/L	1	V, I, U, BSH, S, H	
81.012.024	81.018.024	-	-	20		3,175	C10,C7,C5	JR	4	V, Y, S, H	
81.012.057	81.018.057	-	-	40		3,175	C10,C7	JR	8	Y	
81.012.025	81.018.025	-	-	6000	25	4	2,381	C10,C7	JR	1	I, U
81.012.026	81.018.026	81.071.026	81.072.026			5	3,175	C10,C7,C5	J/B/R/L	1	V, I, U, BSH, S, H
81.012.029	81.018.029	-	-		10	4,762	C10,C7,C5	JR	1	I, U, BSH	
81.012.058	81.018.058	-	-		10	6,35	C10,C7,C5	JR	1	V	
81.012.030	81.018.030	-	-		25	3,969	C10,C7,C5	JR	4	V, Y, S, H	
81.012.059	81.018.059	-	-		50	3,969	C10,C7	JR	8	Y	

Cikkszám (jobbos) Code (right helix)		Cikkszám (balos) Code (left helix)		Max hossz Max length L	d	Menetemelkedés Lead	Da - golyó ø Da - ball ø	Pontossági osztály Accuracy grade	Menet sodrás Threading direction J=jobb; B=bal R=right; L=left	Bekezdés Starts	Anyá típus Nut type
C5	C7	C5	C7			(mm)					
81.012.060	81.018.060	-	-	6000	32	4	2,381	C10,C7,C5	JR	1	V, I, U
81.012.032	81.018.032	81.071.032	81.072.032			5	3,175	C10,C7,C5	J/BR/L	1	V, I, U, S, H
81.012.035	81.018.035	81.071.035	81.072.035			10	6,35	C10,C7,C5	J/BR/L	1	V, I, U
81.012.037	81.018.037	-	-			32	4,762	C10,C7	JR	4	Y
81.012.061	81.018.061	-	-			64	4,762	C10,C7	JR	8	Y
81.012.038	81.018.038	81.071.038	81.072.038			5	3,175	C10,C7,C5	J/BR/L	1	V, I, U, S, H
81.012.041	81.018.041	81.071.041	81.072.041		40	10	6,35	C10,C7	J/BR/L	1	V, I, U
81.012.042	81.018.042	-	-			20	6,35	C10,C7	JR	2	V
81.012.043	81.018.043	-	-			40	6,35	C10,C7	JR	4	Y
81.012.062	81.018.062	-	-			80	6,35	C10,C7	JR	8	Y
81.012.044	81.018.044	-	-			5	3,175	C10,C7,C5	JR	1	V, S, H
81.012.045	81.018.045	81.071.045	81.072.045			10	6,35	C10,C7,C5	J/BR/L	1	V, I, U
81.012.047	81.018.047	-	-		50	20	9,525	C10,C7	JR	1	V
81.012.048	81.018.048	-	-			50	7,938	C10,C7	JR	4	Y
81.012.063	81.018.063	-	-			100	7,938	C10,C7	JR	8	Y
81.012.049	81.018.049	-	-			10	6,35	C10,C7,C5	JR	1	V, I, U
81.012.051	81.018.051	-	-	7000	20	9,525	C10,C7	JR	1	V, U	
81.012.052	81.018.052	-	-		10	6,35	C10,C7,C5	JR	1	V, I, U	
81.012.053	81.018.053	-	-		80	9,525	C10,C7	JR	1	V, U	
					20	9,525	C10,C7	JR	1	V, U	

## SSR TÍPUS SSR TYPE

Cikkszám (jobbos) Code (right helix)		Cikkszám (balos) Code (left helix)		Max hossz Max length L	d	Menetemelkedés Lead	Da - golyó ø Da - ball ø	Pontossági osztály Accuracy grade	Menet sodrás Threading direction J=jobb; B=bal R=right; L=left	Bekezdés Starts	Anyá típus Nut type
C5	C7	C5	C7			(mm)					
81.013.010	81.019.010	-	-	3000	12	10	2,778	C10,C7,C5	JR	2	S
81.013.015	81.019.015	-	-		16	5	2,778	C10,C7,C5	JR	1	S, H
81.013.016	81.019.016	-	-			10	2,778	C10,C7,C5	JR	2	S, H
81.013.017	81.019.017	-	-			16	2,778	C10,C7,C5	JR	4	S, H
81.013.018	81.019.018	-	-			20	2,778	C10,C7,C5	JR	4	S
81.013.023	81.019.023	-	-		20	10	3,175	C10,C7,C5	JR	2	S, H
81.013.029	81.019.029	-	-	6000	25	10	3,175	C10,C7,C5	JR	2	S, H
81.013.030	81.019.030	-	-			25	3,175	C10,C7	JR	4	S, H
81.013.035	81.019.035	-	-		32	10	3,969	C10,C7,C5	JR	1	S, H
81.013.036	81.019.036	-	-			20	3,969	C10,C7,C5	JR	2	S, H
81.013.037	81.019.037	-	-			32	3,969	C10,C7	JR	4	S
81.013.041	81.019.041	-	-		40	10	6,35	C10,C7	JR	1	S, H
81.013.042	81.019.042	-	-			20	6,35	C10,C7,C5	JR	2	S
81.013.043	81.019.043	-	-			40	6,35	C10,C7	JR	4	S
81.013.045	81.019.045	-	-		50	10	6,35	C10,C7	JR	1	S, H
81.013.047	81.019.047	-	-			20	6,35	C10,C7	JR	2	S
81.013.048	81.019.048	-	-	50		6,35	C10,C7	JR	4	S	